

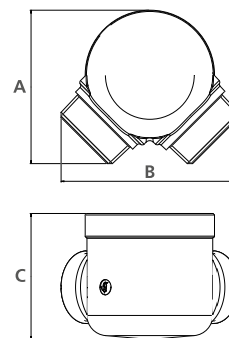
300 PSI rated pressure



A98

ROOF FIRE DEPT. OUTLET
CONNECTION

Two way-angle



SIZE (a x b)	A	B	C
4" x 2 1/2"	6 7/64"	7 11/64"	4 29/32"
6" x 2 1/2"	8 9/64"	9 1/64"	4 33/64"

Used as a standpipe roof outlet connection by the fire service. Provides 250 GPM minimum per outlet. Used with straight or angle hose valves to provide water control.

Standard equipment:

Cast brass body with female NPT inlet and male NPT or male hose thread outlets. Angle connection.

RELATED PRODUCTS



A53

p. 2



A53G

p. 2



A56

p. 4

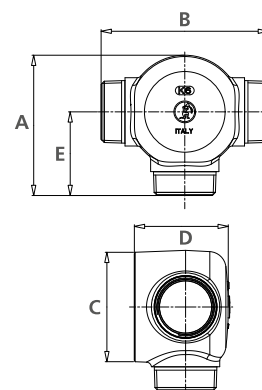
300 PSI rated pressure



A98

ROOF FIRE DEPT. OUTLET
CONNECTION

Three way-angle



SIZE (a x b)	A	B	C	D	E
4" x 2 1/2"	6 15/32"	6 21/32"	5 3/64"	5 21/64"	5 55/64"
6" x 2 1/2"	8 35/64"	9 27/32"	7 3/32"	4 29/64"	7 59/64"

Used as a standpipe roof outlet connection by the fire service. Provides 250 GPM minimum per outlet. Used with straight or angle hose valves to provide water control.

Standard equipment:

Cast brass body with female NPT inlet and male NPT or male hose thread outlets. Angle connection.

RELATED PRODUCTS



A53

p. 2



A53G

p. 2



A56

p. 4