



TOHATSU CORPORATION

PORTABLE FIRE PUMP

MODEL VC72AS



PERRY JOHNSON
REGISTRARS, INC.



JAB
QS Accreditation
R024



UKAS
ENVIRONMENTAL
MANAGEMENT
105-C

**ISO9001:2000, ISO14001
Certified, Tokyo plant**



SPECIFICATIONS

ENGINE	TYPE	2-stroke, 2-cylinder water cooled gasoline engine	PUMP	TYPE	Single-suction, single-stage Centrifugal high pressure turbine pump
	MODEL	VC72AS		DISCHARGE PORT COUPLING	JIS fire thread (B-9912), 2-1/2" male (Standard : Flat Valve , or option : Ball Valve)
	BORE & STROKE & NO. OF CYLINDER	76 mm x 68 mm x 2 (2.99 in. x 2.68 in. x2)		SUCTION PORT COUPLING	JIS fire thread (B-9912), 3" male
	TOTAL PISTON DISPLACEMENT	617 cc (37.64 cu.in.)		PRIMING	Rotary – vane vacuum pump (Oilless type)
	MAXIMUM OUTPUT	55PS/40.5kW		PUMP PERFORMANCE (Suction height : 3 m)	
	FUEL TANK CAPACITY	18 liters (4.76 US gals)		at 0.4 MPa	Over 1,700 lit./min. (449 GPM)
	FUEL CONSUMPTION	12 liters (3.17 US gals) / h.		at 0.6 MPa	Over 1,550 lit./min. (409 GPM)
	STARTING SYSTEM	Starter motor and automatic recoil system		at 0.8 MPa	Over 1,300 lit./min. (343 GPM)
	CHOKE SYSTEM	Auto choke system		at 1.0 MPa	Over 950 lit./min. (251 GPM)
	LUBRICATION	Auto-mixing (Engine oil tank 1.6 liters(0.42 US gals))		OVERALL LENGTH	Approx. 700 mm (27.6 inch)
	IGNITION	Flywheel magneto (C.D.I. System)		OVERALL WIDTH	Approx. 620 mm (24.4 inch)
	LIGHT BULB	12V-35W		OVERALL HEIGHT	Approx. 730 mm (28.7 inch)
BATTERY	12V	GENERAL	MASS	85 kg (187 lbs)	
			MAX.SUCTION HEIGHT	9 m.	

Features of VC72AS

1. Light weight and compact

Engine and pump castings are made of anti-corrosive aluminum-alloy to reduce weight and prolong working life. Compact unit in its class fits existing locker space, also can be carried by 2 firemen.

2. High pump performance

Both engine and pump are designed and developed exclusively for fire pumps by Tohatsu, ensuring higher pump performance for its class.

3. Reliable engine with oil injection/auto mixing oil delivery system

The engine of VC72AS is originally designed by Tohatsu for this VC series models. Equipped with oil pump, gasoline and engine oil are mixed automatically at a precise ratio to engine speed without mixing fuel and oil by operator.

4. Priming

Quick priming is provided by operating Rotary Vane Vacuum Pump. Prime 3 meters in 6 seconds.

5. Centralized control

All gauges, throttle dial, control switches, and other warning lamps are grouped on the control panel for easy operation.

6. Cooling water recirculation system

Engine cooling water is returned to the pump eliminating discharge outside of the pump, and contamination of surrounding area.

7. Unique auto choke carburetor

This device helps engine start easier in all seasonal temperature conditions.

8. Engine overheat protection sensor

Overheat protection is provided on this model to safeguard the engine from cooling water loss, and to protect engine when water is not discharging. This device stops the engine automatically when engine temperature reaches 80°C. Reset switch is provided to release the sensor after it stops the engine.

9. Stainless steel fuel tank

Integrated fuel tank with large capacity of 18liters ensures the fuel supply will last for 1 hour at least at maximum throttle opening and load.

10. 180degree rotating discharge port

11. Electric starter with back up recoil starter

An electric starter and back-up recoil starter are installed to guarantee starting engine under any conditions.

- Accessories :**
1. Battery charger
 2. Floodlight projector
 3. Plastic toolbox

OK Monitor

The OK Monitor checks the following 4 points:



Engine Oil Level Indication Lamp

This warning lamp lights up when the oil level in the engine oil chamber reaches a dangerous low level. The lamp lights up when 3/4th of the oil has been used, and the oil must be filled immediately.



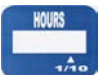
Fuel Level Alarm Lamp

The warning lamp lights up when the level of fuel in the tank is low (2/3rd empty). Fuel should be added as necessary. The tank should be kept fully topped up with fresh fuel.



Engine Overheat Protection Sensor Device

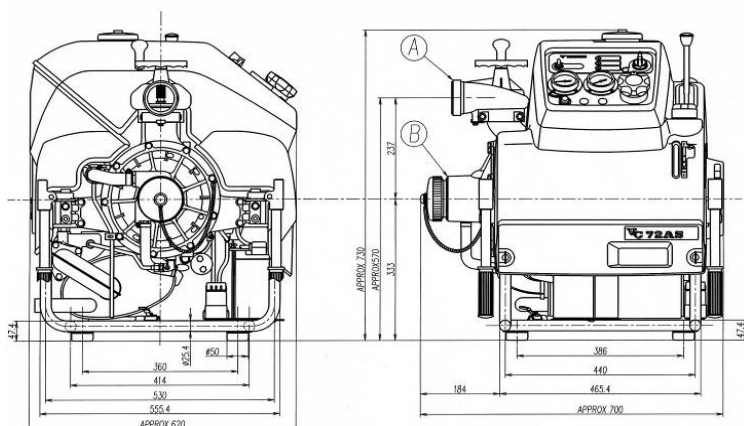
This device stops the engine automatically when the engine has excessively heated caused by lack of cooling water. The engine will stop and the lamp will light when the overheat sensor works.



Hours Meter

Hours Meter starts counting when main switch is turned "ON" position. It is useful for periodical inspection.

EXTERNAL VIEW



PERFORMANCE CURVES

