



SILENT CHECK VALVE

WAFER TYPE ANSI CLASS 125

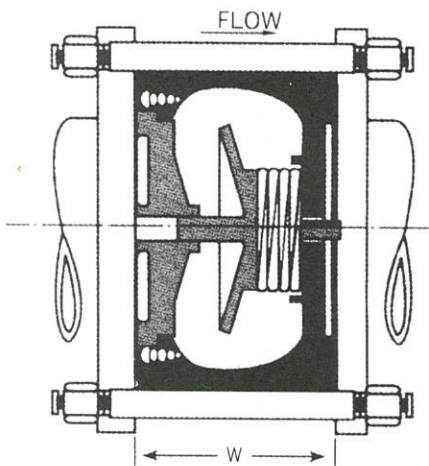
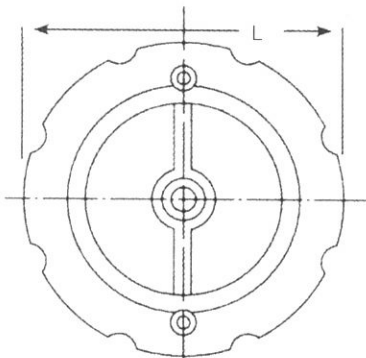
MATERIAL SPECIFICATION

Part Name	Material / ASTM NO.
1. Body	Cast Iron, A126 Class B
2. Disc	Bronze ASTM B584 Option : (Stainless Steel, A351 CF8M)
3. Seat Ring	Stainless Steel, A351 CF8M
4. Bushing	Bronze, B62 C83600
5. Spring	Stainless Steel, AISI 304



SL-10330

INSTALLATION POSITION : Valves can be installed in any position i.e. horizontal or vertical



PRESSURE AND TEMPERATURE

Nominal Pressure	:	200 psi
Hydraulic Shell Test Pressure	:	400 psi
Hydraulic Seat Test Pressure	:	250 psi
200 psi at	:	-10 to 120°C
200 psi at	:	14 to 250°F
Suitable Media	:	Water, Oil, Gas

DIMENSIONS - WEIGHTS

NOMINAL SIZE INC.	DIMENSIONS			*Cv	WEIGHT KG.
	L	W			
	PN16 MM.	ANSI 125 INC.	MM.		
2	108	4.1/4	67	50	2.3
2.5	127	5	73	72	3.2
3	146	5.3/4	83	92	5.0
4	178	7	102	180	8.2
5	213	8.3/8	118	276	11.3
6	248	9.3/4	140	408	15.9
8	305	12	165	720	35.0
10	359	14.1/8	216	1080	56.0

*Cv: Usgallons Per minute of water at 1 psi pressure drop.

Note:

- Suitable for fitting between flanges to BS 4504 PN 16 ANSI Class 125