

TEST & DRAIN VALVE



Model: Q2968

Rated 300 PSI. Forged Brass Body
Chrome Plated Brass Ball with Teflon Seats.

Description

This Test & Drain Valve Used to test water flow through sprinkler systems. When not in the closed position, the valve can be either fully open (full port), or tested through a ½" restricting orifice. The valve features two large and integral sight glasses allowing for maximum visibility when operated. The compact and integrated form allow for installation in both horizontal and vertical orientations in a small amount of space.

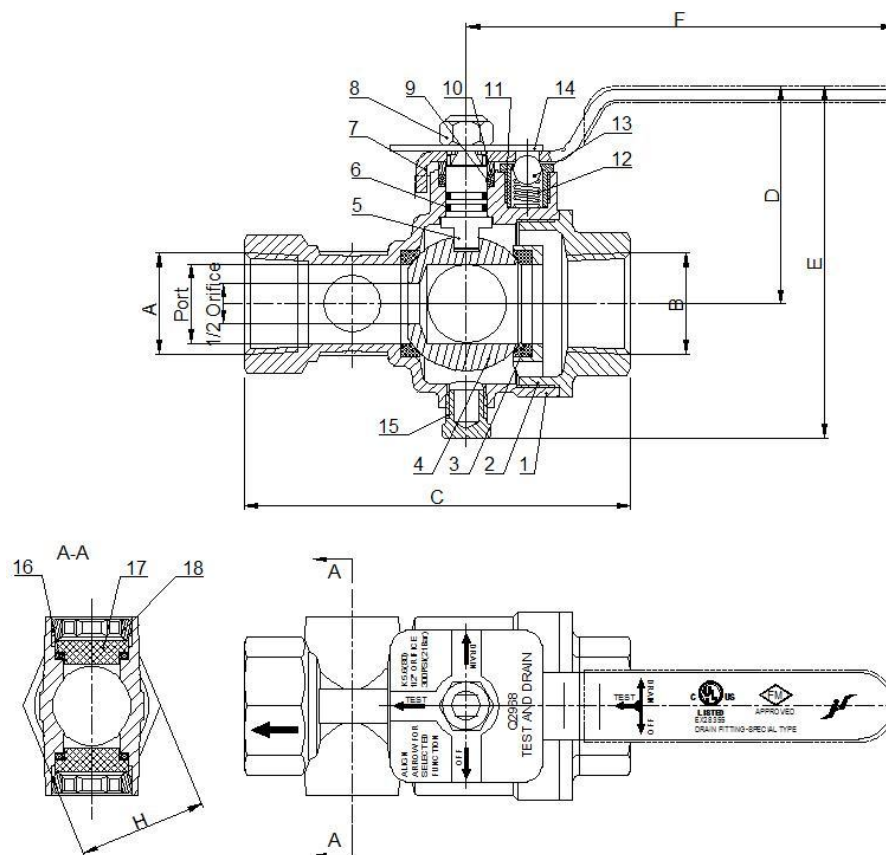
Features

- Positive positioning of handle for OFF, TEST, or DRAIN
- Only 2 threaded connections
- Large, integral sight glass on both sides
- ½" (nominal) test orifice
- UL/ULC Listed EX28355
- FM Approved



Installation

Installation practices consistent with those of the re sprinkler industry are appropriate for the installation of this product. Can be installed either vertically or horizontally. Always make sure to properly "hold back" the valve and each component being installed to the valve to prevent over tightening or stressing of the valve body. It is also necessary to make sure all components are in proper alignment in the assembly where the ball valve is present. Improper alignment of attached components may create stress on the valve leading to valve failure. Use a suitable thread sealant such as PTFE tape or PipeFit Thread Sealant Paste with PTFE. Never use tape and paste together. We do not recommend the use of anaerobic sealants with this product. The materials used in this sealant type are highly



A/B	Orifice	Port	C	D	E	F	H
NPT 1"	1/2" (0.512)	1.024"	5"	2.81"	4.56"	5.55"	1.65"
NPT1-1/4"	1/2" (0.528)	1.024"	5"	2.81"	4.56"	5.55"	1.65"
NPT 1-1/2"	1/2" (0.524)	1.575"	6.57"	3.5"	5.8"	6.34"	2.28"
NPT 2"	1/2" (0.524)	1.575"	6.57"	3.5"	5.8"	6.34"	2.28"

NO	Part	Material ASTM	NO	Part	Material ASTM
1	Body	C37700	10	Gland Ring	C37700
2	Cap	C37700	11	Gland Nut	C37700
3	Seal	PTFE	12	Spring	304
4	Ball	C37700	13	Steel Ball	304
5	Stem	C37700	14	Indicator Plate	304
6	O-Ring	NBR	15	Plug	C37700
7	Lever	304	16	Washer	NBR
8	Nut	304	17	Sight Glass	Lexan
9	Gland packing	PTFE	18	Retaining Ring	C37700

NINGBO HUACHENG VALVE CO.,LTD
Add.: No.103 Chenzhan East Road, Huangtan Town,
Ninghai, Ningbo, Zhejiang, China
Tel.:+86 574 65278660
Website: www.huachengvalve.com

CERTIFICATE OF COMPLIANCE

Certificate Number R-EX28355
Report Reference EX28355-20200630
Issue Date 2020-JULY-07

Issued to: NINGBO HUACHENG VALVE CO LTD
No 103 Chezhan East Rd
Huangtan Town
Ninghai, ZHEJIANG 315600 CHINA

**This certificate confirms that
representative samples of** DRAIN FITTINGS, SPECIAL TYPE
Refer to addendum page

Have been investigated by UL in accordance with the
Standard(s) indicated on this Certificate.

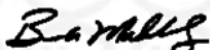
Standard(s) for Safety: UL Subject 258, Outline of Investigation for Shutoff Valves
for Trim and Drain Purposes
ULC/ORD-C258, Shutoff Valves for Trim and Drain
Purposes for Fire Protection Service
UL 199, Automatic Sprinklers for Fire-Protection Service
(Calibration test only)

Additional Information: See the UL Online Certifications Directory at
<https://iq.ulprospector.com> for additional information.

This *Certificate of Compliance* does not provide authorization to apply the UL Mark. Only the UL Follow-Up
Services Procedure provides authorization to apply the UL Mark.

Only those products bearing the UL Mark should be considered as being UL Certified and covered under UL's
Follow-Up Services.

Look for the UL Certification Mark on the product.



Bruce Mahrenholz, Director North American Certification Program

UL LLC

Any information and documentation involving UL Mark services are provided on behalf of UL LLC (UL) or any authorized licensee of UL. For questions, please
contact a local UL Customer Service Representative at <http://ul.com/aboutul/locations/>



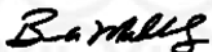
CERTIFICATE OF COMPLIANCE

Certificate Number R-EX28355
Report Reference EX28355-20200630
Issue Date 2020-JULY-07

This is to certify that representative samples of the product as specified on this certificate were tested according to the current UL requirements.

Model Q2968 test and drain fitting in the following nominal sizes, discharge coefficients and rated pressures:

Size, in.	Nominal K-Factor, gpm/(psi) ^{1/2}	Rated Pressure, psig
1	5.6	300
1-1/4	5.6	300
1-1/2	5.6	300
2	5.6	300



Bruce Mahrenholz, Director North American Certification Program

UL LLC

Any information and documentation involving UL Mark services are provided on behalf of UL LLC (UL) or any authorized licensee of UL. For questions, please contact a local UL Customer Service Representative at <http://ul.com/aboutul/locations/>





Certificate of Compliance

This certificate is issued for the following:

Sprinkler System Alarm Test Device

Model Q2968

Sizes: 1, 1-1/4, 1-1/2, 2 inch NPS

K-Factor: 5.6

Prepared for:

Ningbo Huacheng Valve Co. Ltd.
No. 103 East Chezhan Rd.
Huangtan Town, Ninghai, Ningbo City
Zhejiang 315600 China

Manufactured at:

Ningbo Huacheng Valve Co. Ltd.
No. 103 East Chezhan Rd.
Huangtan Town, Ninghai, Ningbo City
Zhejiang 315600 China

FM Approvals Class: 1625 (December 2009)

Approval Identification: PR453459

Approval Granted: May 5, 2020

To verify the availability of the Approved product, please refer to www.approvalguide.com

Said Approval is subject to satisfactory field performance, continuing Surveillance Audits, and strict conformity to the constructions as shown in the Approval Guide, an online resource of FM Approvals.

A handwritten signature in dark blue ink, appearing to read "D.B. Fuller".

David Fuller
VP - Manager of Fire Protection
FM Approvals
1151 Boston-Providence Turnpike
Norwood, MA 02062



Member of the FM Global Group