

AH-0822

Gas Detector



Characteristics

- The AH-0822 features advanced technology, high accurate detection, low power-consumption and fast reaction time. It can detect natural gas and propane gas. Built-in buzzer and LED indicator alert by sounding and flashing.
- Sounding and flashing in alarm status; the green LED is lit during monitoring and the red LED flashes in alarm status.
- Dual power input: 12VDC and 24VDC operation in the same unit. No adjustment is required.
- Optional 110VAC or 220VAC adaptor is available.
- 1 set of relay output : COM. NO. NC. for CE version .



Specifications

Model	AH-0822			
Approval	UL		CE	
Power Source	24V DC	12V DC	24V DC	12V DC
Standby Current	25~30mA	40~45mA	35~40mA	65~70mA
Alarm Current	40~70mA	50~75mA	75~90mA	90~105mA
Warm-up Period	5~8 minutes		about 35 seconds	
Sensitivity	0.021 ~ 0.300% (Propane) 0.050 ~ 0.714% (Methane)		0.050 ~ 0.300%	
Alarm Sound	85dB/3M and above		90dB/M and above	
Relay Output			1 set of contact	
Detection Type			Natural Gas & Propane Gas	
Ambient Temperature	-10°C ~ +55°C			
Dimensions	102 mm (Dia.) x 40.5 mm(H)			
Weight	About 130g			



HORING LIH INDUSTRIAL CO., LTD.

4F., No. 18, Lane 327, Chung Shan Road, Sec. 2, Zhonghe District 235, New Taipei City, **Taiwan**
Tel : +886 2 22487599 Fax : +886 2 22407752 Email : export@horinglih.com Website : www.horinglih.com

Owner's Manual for AH-0822 Gas Detector

Maintenance

This product does not need special maintenance. Performing the self-test regularly to make sure the detector is operating normally.

Test

Detector undergoes strict quality control and inspection before leaving the factory. To test, inject a small volume of gas into the detector through detection hole. The detection device will activate when the gas density is over the standard. To maximize detectors operating life, do not inject the gas when the detector is charging. If the detector still sounds after testing, this could mean too much gas was injected. It will return to normal when gas density decreases.

WARNING!!! Do not inject too much gas to avoid the danger of poisoning.

Trouble Shooting

Power indicating LED doesn't light	Check the input power to see if it is normal. Check the plugs to see if the connection is good. Power indicating LED is out of order.
Alarm-indicating LED doesn't light when active	Alarm-indicating LED is out of order.
Buzzer does not sound when active	Inside buzzer failure.
No action when testing	The injected gas is not the right type for the detector.

Installation Instructions

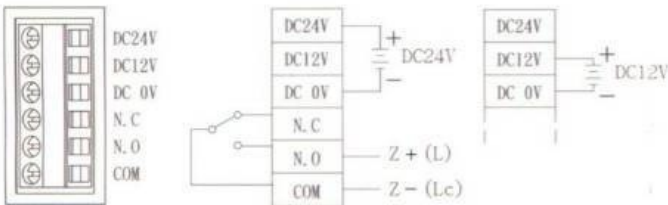
For combustible gas lighter than air (Natural Gas), follow regulation below:

1. Detector should be installed within 4m of the gas appliance measured horizontally. If the ceiling is divided by 0.6m or bigger beam, detector should be installed at the side of beam near the gas appliance.
2. In a room with gas appliance where there is an air-intake vent near the ceiling, the detector should be installed close to the air-intake vent (the air-intake vent could be ignored if it is separated from gas appliance by a 0.6m or bigger beam).
3. Detector base should be within 0.3m of the ceiling.

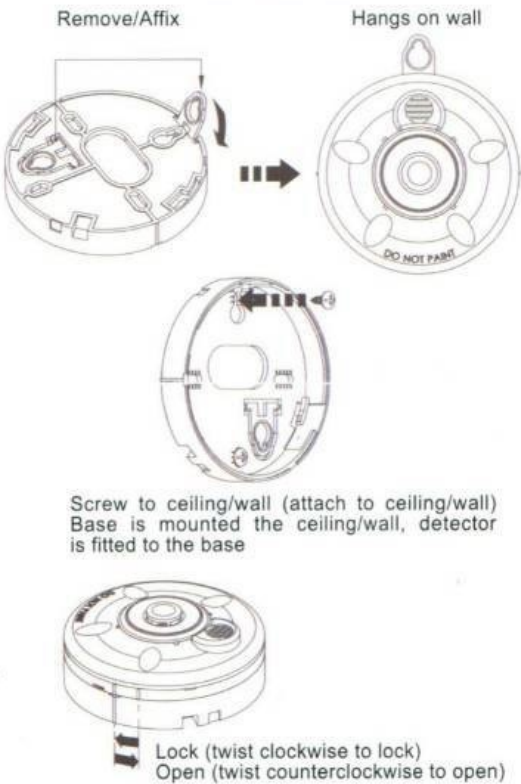
For combustible gas heavier than air (LPG), follow regulation below:

1. Detector should be installed within 4m of the gas appliance measured horizontally.
2. Top portion of detector should be within 0.3m of the floor.

Wiring method



Mounting Detector



Installation

